



Promoting
sustainable
living in
Hume City



HUME CITY COUNCIL **LIVE GREEN PLAN** **2021 – 2026**

www.hume.vic.gov.au

Hume City Council recognises the rich Aboriginal heritage within the municipality and acknowledges the Wurundjeri Woi Wurrung, which includes the Gunung Willam Balluk clan, as the Traditional Custodians of this land. Council embraces Aboriginal and Torres Strait Islander living cultures as a vital part of Australia's identity and recognises, celebrates and pays respect to the existing family members of the Wurundjeri Woi Wurrung and to Elders past, present and future.



Contents

1. Introduction	4
2. Community consultation	5
3. Council's strategic directions and the Live Green Plan	6
4. Our community values environmental sustainability	8
5. Principles - our approach to engaging the community	9
6. Snapshot of achievements	10
Live Green workshops	10
Hume Sustainability Taskforce	10
Enviro Champions	11
Environmental scholarships	11
Greening Program	11
Community energy efficiency	11
Schools programs	12
ResourceSmart Schools	12
Teachers' Environment Network (TEN)	12
Schools for Nature	12
7. Themes in focus	14
Energy saving and climate change action	14
Waste reduction and increased recycling and composting	15
Aboriginal and Torres Strait Islander People's ecological practices	16
Connecting with nature and taking action to protect it	19
Food growing and sustainable food	19
8. Get involved and take action for the environment	20
9. Live Green Action Plan 2021 – 2026 - Deliverables and programs	21



1. Introduction

This *Live Green Plan* sets out how Hume City Council will engage the people of Hume City to live in an environmentally sustainable way. Council's local focus means it is well placed to support people to thrive in healthy communities in a healthy environment.

Hume City Council proudly serves one of the most culturally diverse Local Government Areas in Victoria. Our residents come from 156 different countries and speak over 153¹ languages. Hume is home to people of diverse socio-economic backgrounds and situations, differing abilities, sexual orientation, and gender identities.

At the 2016 census, there were 197,376 people living in Hume, with 33 per cent born overseas. The median age is 33 years, with 26 per cent of households being couples without children, and 73 per cent being families with children².

Hume City is one of the fastest growing municipalities in Melbourne. In 2020 the population was estimated at 241,000. By 2041 Hume's population is forecast to grow to 372,600³. With a rapidly growing population comes increased use of land, energy, water, and other resources. Increased urbanisation leads to increased pollution and waste generation. Hume's communities and our waterways have been impacted by industrial fires and illegal storage and treatment of waste.

- 1 Australian Bureau of Statistics, Census of Population and Housing, 2016
- 2 Australian Bureau of Statistics, Census of Population and Housing, 2016
- 3 Hume Council Plan 2020-2021



We demonstrate sustainable living at Live Green workshops and events.



Community input was integral to the development of this Live Green Plan.

2. Community consultation

In developing this Plan, community consultation sessions were held, and input was provided by more than 135 community members. This input was gained via:

- › Community surveys
- › Survey of Hume City Councillors
- › *Hume Community Indicators Survey 2018/19*
- › Focus group with Teachers' Environment Network
- › Focus group with Hume Enviro Champions
- › Consultation with Hume Sustainability Taskforce
- › Consultation with Hume Reconciliation Action Plan Working Group
- › Consultation with Hume Interfaith Network
- › Consultation with Hume preschool teachers
- › Hume City Council staff working group, and Green Team members
- › Focus group with Hume residents from a broad cross section of the community.

Feedback was also collected from participants at Live Green workshops and this helped inform the priorities in this Plan. We also spoke with staff at other Councils to make sure our programs are keeping pace with sustainability education in other areas.

- › Public exhibition of the draft including a workshop session.



3. Council's strategic directions and the Live Green Plan

Hume's community vision is:

A sustainable and thriving community with great health, education, employment, infrastructure, and a strong sense of belonging.

The Council Plan 2021–2025 sets the strategic direction of Council in helping support the delivery of our Community Vision. It outlines the themes, strategic objectives and actions that Council will undertake in the four-year term to achieve the community's vision and aspirations.

This Live Green Plan contributes to the three themes of the Community Vision and Council Plan, particularly the first two:

1. A community that is resilient, inclusive, and thriving
2. A city that cares about our planet and is appealing and connected
3. A Council that inspires leadership, is accountable, and puts the community first.

The guiding principles of the Council Plan are Sustainability and Social Justice. The Council Plan also takes an integrated approach to planning and incorporates actions that are part of Council's Disability Action Plan, Community Safety Action Plan and Pathways to Sustainability.

The Live Green Plan also incorporates strategic objectives and complements Hume's Multicultural Framework, 0-24 Framework, Learning Together 2030 Strategy and the Health and Well-being Plan⁴.

Hume's *0-24 Framework* aims to support young people to experience a good life, experience health and wellbeing and participate in the community.

Hume's *Multicultural Framework* includes practices that are incorporated into the Live Green Plan, including facilitating community-based activities, programs and events across the municipality to celebrate Australian history and new and emerging cultures with the aim of promoting harmony and building community connections.

Hume's *Reconciliation Action Plan 2020-22* states: *Provide and share information with the broader community about Aboriginal and Torres Strait Islander histories and cultures.* Council runs events through the Live Green workshops to support the Wurundjeri Woi Wurrung and other local Aboriginal and Torres Strait Islander people to educate the broader community about traditional ecological cultural practices.

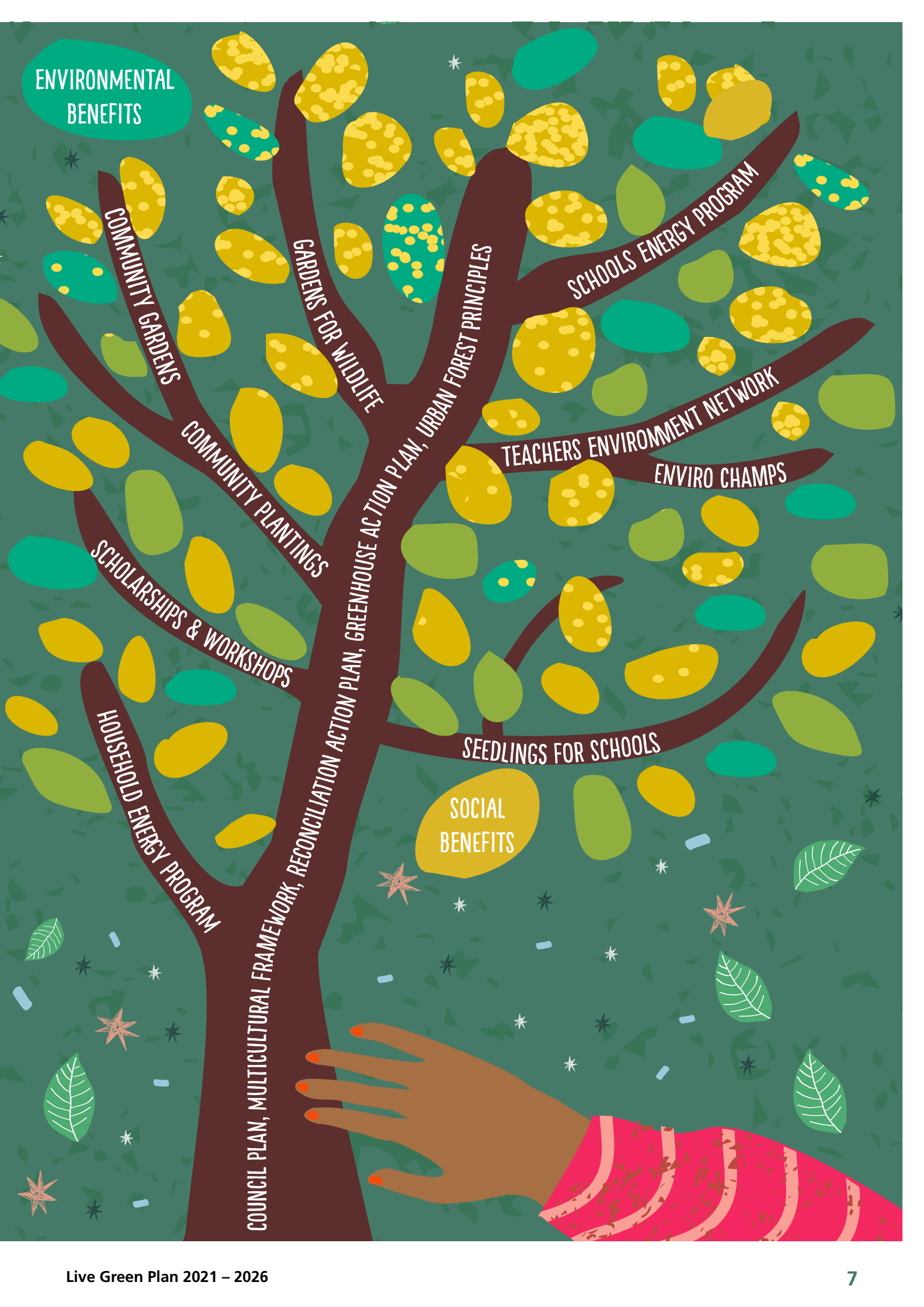
Waste avoidance is the highest priority on the waste hierarchy followed by reducing waste. Council has a number of programs in place to support and encourage residents in waste avoidance and reduction, increased composting and effective use of the waste and recycling services provided.

The *Learning Together 2030* strategy recognises the importance of lifelong learning for personal development and community wellbeing. Sustainability education through the Live Green program is one of the ways Council supports lifelong learning for residents.

Hume's new Health and Wellbeing Plan will acknowledge the significant impacts of climate change on health and well-being and support community climate action.

LOVE OUR EARTH

⁴ A new Health and Wellbeing Plan is under development at the time of writing.



ENVIRONMENTAL BENEFITS

COMMUNITY GARDENS

GARDENS FOR WILDLIFE

SCHOOLS ENERGY PROGRAM

COMMUNITY PLANTINGS

TEACHERS ENVIRONMENT NETWORK

ENVIRO CHAMPS

SCHOLARSHIPS & WORKSHOPS

HOUSEHOLD ENERGY PROGRAM

SEEDLINGS FOR SCHOOLS

SOCIAL BENEFITS

COUNCIL PLAN, MULTICULTURAL FRAMEWORK, RECONCILIATION ACTION PLAN, GREENHOUSE ACTION PLAN, URBAN FOREST PRINCIPLES



Community plantings are one way residents demonstrate how they care for where they live.

4. Our community values environmental sustainability

In the recent past, Hume residents have indicated that environmental sustainability is important to them, they are concerned about climate change and Council's provision of environmental sustainability education and advice is valued.

In the Hume City Council Community Indicators Survey 2018/19, 93 per cent of respondents indicated that environmental sustainability was 'somewhat' or 'extremely' important to them. They also identified parks, gardens and the natural environment as one of the most important long-term priorities for Council to consider in planning. Similarly, Hume's Community Survey 2019-20 found that 85 per cent of respondents believe Council's provision of environmental sustainability education and advice is important, with the majority rating it 'extremely important.'

Between 2015 – 2019, there were more than 11,273 participations (including 6,166 school students) in 247 tree planting events. This level of community engagement in environmental programs demonstrates that our community members place a high value on environmental education and hands-on environmental action.

Globally, we face enormous and urgent environmental challenges particularly from climate change and its impacts. Hotter, drier conditions, severe weather events and the impacts these have on our food and water, oceans and coastal areas and the spread of disease will increasingly impact on our enjoyment of nature, our housing, lifestyles and the health of wildlife and waterways. Hume's

rural community members have been challenged by the impacts of climate change for some time with Hume's already dry soils becoming drier, making it more difficult to obtain an income from farming. 80 per cent of respondents to the 2021 Climate Change Community Views survey indicated they were somewhat or extremely concerned about climate change. 79 per cent indicated it was important for Council to take action on climate change and there was also a high level of support for the term 'climate emergency' at 76 per cent. Sustainable ways of living, reducing greenhouse gas emissions, finding new ways to live with climate impacts and working together to support each other on these journeys is more important now than ever before.

Through the Live Green Plan, Council will support and foster environmental understanding, actions, activity and advocacy by residents so that residents and Council can work collaboratively to influence issues that affect us here in Hume as well as issues beyond the jurisdiction of local government that affect the broader community.

Our intention is to work with residents to help make Hume an even better place to live, work and play now and into the future.

5. Principles - our approach to engaging the community

- **Support community advocacy and action**
– A strategic objective of Hume’s Council Plan 2017 – 21 is to create a community actively involved in civic life. The Hume Citizens Bill of Rights contained in Hume Horizons 2040 states that residents have a right to participate in public life. The Live Green program will support the many environmental action and advocacy groups in Hume’s community, and sees these community groups as partners for achieving positive environmental and social outcomes.
- **Achieve multiple outcomes** – Seeking to achieve multiple outcomes will enable the program to be more effective. Health and wellbeing, life-long learning, avoiding waste, supporting young people to experience a good life, working in partnership with the local Aboriginal and Torres Strait Islander community, and engaging with Hume’s culturally diverse community are all positive outcomes identified in other Council Strategies that will be achieved and strengthened through the implementation of this Live Green Plan
- **Build on strengths and empower**
– Our community members have a lot of strengths. Community members are experts about their own lives. A strength-based approach to environmental education and community development enables Council to learn from the community, and helps to build on the existing knowledge, experience and sustainability practices of our community members and to facilitate peer-to-peer learning and community building.
- **Partnerships and target audiences** – Council is just one of many parties working to create a sustainable Hume City. To be most effective and achieve significant change, Council will continue to work in partnership and help build the capacity of community groups and community organisations to facilitate, advocate for and achieve change. Council will offer targeted programs to reach specific audiences on general and wide-ranging sustainability issues.

Targeted audiences will include:

- › Multicultural communities and newly arrived residents
 - › Young people
 - › Families
 - › Low income households and households vulnerable to bill stress, and
 - › Community groups and community organisations
- **Remain flexible and adapt** – While identifying priority areas, our programs will remain flexible and keep track of emerging issues and trends so that priorities can be adapted and resources redirected if necessary. New objectives from the 2021-2025 Council Plan and Health and Well-being Plan will be integrated into the Live Green program where applicable. The program will evaluate, learn from and adapt approaches, experiment and test new ways of working, recognising there is no one way to effect change.
 - **Use a mix of approaches** – The program will use a mixture of approaches to achieve change and use evidence to tailor approaches to the situation, audience and outcome sought. Through its engagement work, at times Council plays a role as educator, but at other times is an enabler, funder, facilitator, demonstrator, partner, relationship builder and/or connector.
 - **Work at the right scale** – Through some initiatives, the program will engage deeply, working intensively with smaller groups or specific target audiences; whereas other initiatives will aim to reach more of the population or have the potential to be scaled up. Council will consider how the various initiatives can contribute towards achieving significant change.
 - **Evidence based sustainability programs** – Council evaluates the effectiveness of the Live Green programs to assess environmental and social benefits by using a mix of qualitative and quantitative approaches.

6. Snapshot of achievements

Since the establishment of the Live Green Program in 2011, it has continued to grow in its reach and effectiveness. Some of the positive environmental and social outcomes resulting from the Live Green program to date are as follows:

Live Green workshops

- › In 2013 there were 994 participants in Live Green workshops and in 2018, this figure had almost doubled to 1944. By 2019, Council was running 20 Live Green community workshops per year and in 2020 we delivered a number of online webinars and short videos, during pandemic restrictions, as part of the Live Green program.
- › A minimum 84 per cent of Live Green workshop respondents reported changes in behaviour towards more sustainable living.

Hume Sustainability Taskforce

The Hume Sustainability Taskforce is Council's community environment advisory committee. Established in 2002, the Taskforce gives a voice to the community to provide input and advice about Council's environmental policies and programs. The Taskforce has an engaged membership consisting of Councillor representatives and community members from many walks of life, cultural backgrounds, and community groups.

In 2018 we undertook an extensive review of the operations of the Taskforce. The Hume Sustainability Taskforce now regularly makes direct recommendations to Council on a broad range of environmental issues. Environmental advocacy by the Taskforce is taken seriously by Councillors who, as a direct result of recommendations by the Taskforce, have:

- › Advocated to the Federal government to sign the Treaty on the Prohibition of Nuclear Weapons.
- › Advocated to the State government for the implementation of a container deposit scheme for beverage containers as a way of reducing waste in the environment and increasing recycling.
- › Written to the Federal Government to request the declaration of a national climate emergency and funding to Local Councils to mitigate and adapt to the worst impacts of climate change.



Community members \ assessing the heat island effect on different urban forms at a Citizen Science workshop.



Over 11,273 participations in 247 tree planting events.

Enviro Champions

Between 2012 – 2019, 136 community members have been trained through Council's Enviro Champions program which provides support for community members running environmental projects in the community. The Enviro Champions have created and implemented 56 community sustainability projects and the collective reach of their projects has engaged 12,665 other community members in sustainability activities and education⁵.

Community projects initiated by Enviro Champions have included a seed library, grassland restoration, nature strip plantings, community fruit orchard, supporting cafes to reduce single-use plastics, teaching STEM in schools, a climate action group, an indigenous food garden, wetland clean up events, a clothes swap, reusable produce bags, and beeswax wraps. The reach of these community projects increases the overall culture of sustainable living in Hume.

Environmental scholarships

In 2018 Council initiated the Environmental Scholarships program to provide financial assistance towards environmental education for members of the Hume community wishing to take action to improve Hume's environment.

Courses funded include conservation land management and environment and sustainability. The scholarship funds up to 80 per cent of course fees, to a maximum of \$1,500 per applicant. Between 2018 and 2020 Council issued 16 scholarships.

Greening Program

The Community Greening Program continues to be popular with the Hume community.

- › Between 2015 – 2019, more than 11,273 participants (including 6,166 school students) attended the 247 tree planting events
- › 46,260 plants were planted
- › Approximately 21,997 seedlings were donated through the Seedlings for Schools program.

Community energy efficiency

Between 2015 – 2019, the Hume Energy Savers program supported more than 2,000 Hume households to replace 11,596 lights to energy efficient LED lights, free of charge.

Through this program, greenhouse gas emissions were reduced by at least 1,290 (CO₂e) per year and collective financial savings for residents has been \$384,357 per year.

⁵ Hume City Council Enviro Champions Final Evaluation Reports 2015, 2016, 2017, 2018, 2019.



The Enviro Champions Great Green Get Together 2019.



Hume's Sustainability Taskforce in 2019.

Schools programs

ResourceSmart Schools

Between 2017 - 2019 (since data became available), Hume schools participating in the ResourceSmart Schools program have saved a total of:

- › **1,314** tonnes of greenhouse gas emissions
- › **16,197kL** of water
- › **2,478** cubic metres of waste and
- › Students have also planted **3,575** plants (additional to the Seedlings for Schools and community Greening Programs).

Council funded three preschools in Hume to embed sustainability into operations and curriculum through the ResourceSmart Schools program. Hume's Children's Services Family Handbook and Procedure Manual 2020 states: "By embedding sustainable practices into service operations, children and the early learning settings are supported to become environmentally responsible, to show respect for the environment to promote learning and understanding of the world around us." (p57)

Teachers' Environment Network (TEN)

Between 2015 – 2019 Hume ran quarterly professional development sessions for teachers. Over 200 teachers participated. More than 90 per cent of participants who responded to our evaluation surveys stated they gained new skills and knowledge. In 2019 the Teachers' Environment Network became a collaboration with Whittlesea Council, and in 2020 we began running our professional development sessions for teachers as webinars. This increased participation in TEN meetings, with approximately 35 teachers attending each session.

Schools for Nature

In 2019 Council initiated a program of biodiversity projects in schools. The Schools for Nature program began with support from the State Government's Department of Environment, Land Water and Planning (DELWP) grants under the Caring for Our Local Environments (COLE) program. Seven schools created new natural habitat areas and outdoor learning spaces. Five schools came together for the Schools for Nature Student Leadership Summit to share their learnings about environmental volunteering with each other.



A school biodiversity project.

School Food Garden.



“Waste reduction and increased recycling and composting is something in particular that needs addressing now to reduce the amount of recyclable and compostable material going into landfill.”

Live Green Review survey participant



7. Themes in focus

In developing this Plan, consultation with community members revealed that residents want Council to incorporate a number of priority themes into the Plan. These themes include:

- › Energy saving and climate change action
- › Waste reduction and increased recycling and composting
- › Aboriginal and Torres Strait Islander People's ecological practices
- › Connecting with nature and taking action to protect it, and
- › Food growing and sustainable food.

A survey of community members returned 56 responses. When asked what themes were important for the Live Green Plan to cover, the top two issues respondents thought should be tackled first were energy saving and climate change action, and waste reduction and increased recycling and composting.

Energy Saving and climate change action

Results from the 2021 Climate Change Community Views survey show the top three actions the community respondents would like Council to act on in terms of climate change are:

- › Ensuring the municipality is well designed for low greenhouse gas emissions living
- › Supporting Hume community members to reduce greenhouse gas emissions
- › Advocating to the Victorian and Australian governments to take more action on climate change.

This *Live Green Plan* supports Hume community members to reduce greenhouse gas emissions and supports community action and advocacy on climate change.

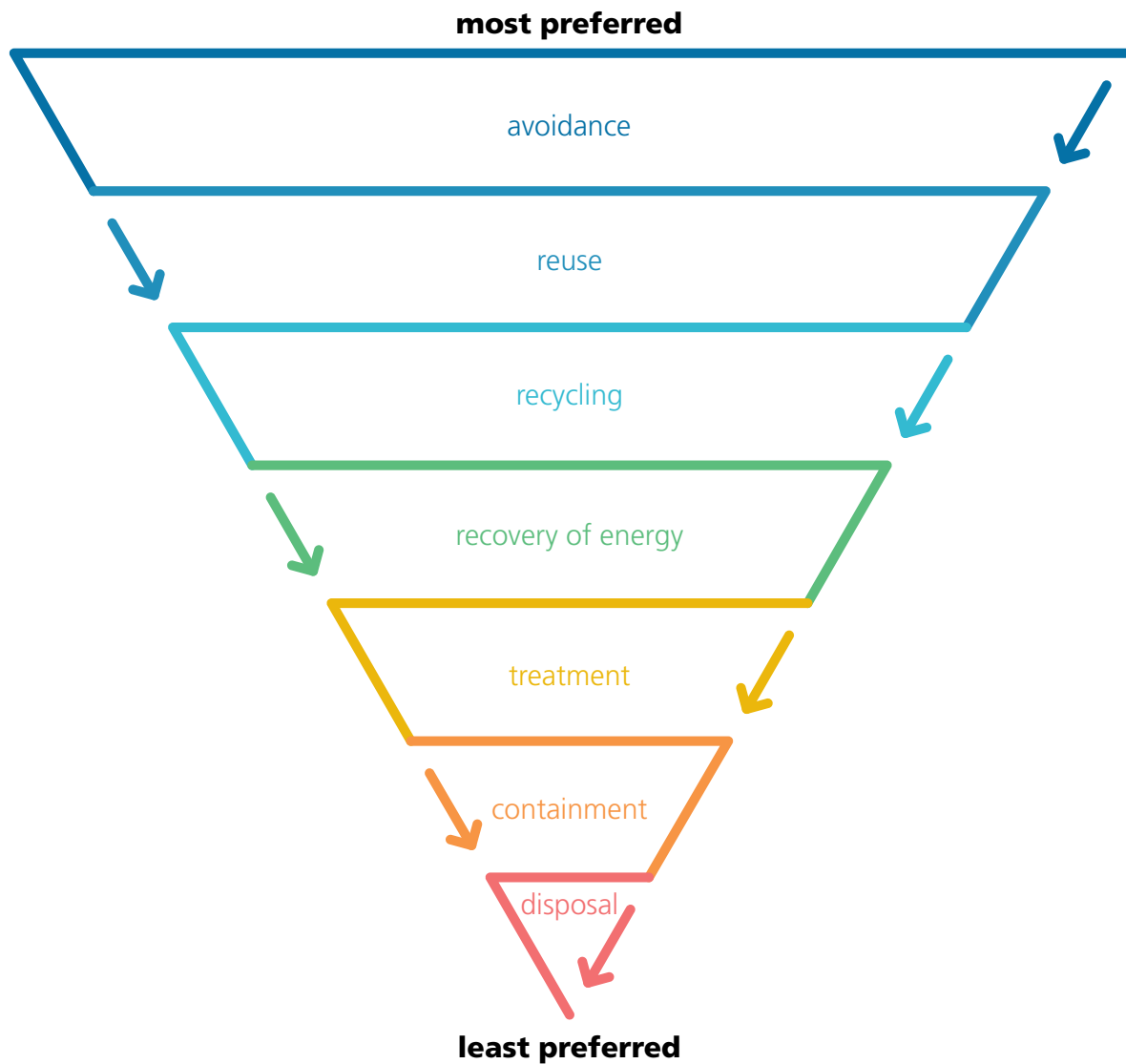
Council's *Greenhouse Action Plan 2018 – 2022* includes a goal to demonstrate leadership by assisting the community to reduce emissions. Through the Greenhouse Action Plan, and Council's Household Energy Program, we are supporting Hume households, particularly those vulnerable to bill stress to reduce bills, improve thermal comfort and reduce greenhouse gas emissions at home. The Hume Household Solar Roll-out program supports Hume households, to have solar panels installed at little or even no upfront cost.

As well as providing direct assistance for residents to reduce their greenhouse emissions, Council also provides support and assistance for groups and individuals engaging in advocacy, climate mobilisation and exploring adaptation options for living with climate impacts.

There are a number of community groups in Hume advocating for greater action on climate change. During community consultation on the Live Green Plan, residents told Council they want to see more support for community action on climate change. Residents stated they especially want to see support for youth-led action on climate change.

While the impacts of climate change affect all residents, certain groups within the community are particularly vulnerable. This includes low income households, those who are socially isolated, older people, people with pre-existing medical conditions, and people from culturally and linguistically diverse backgrounds. Actions led by Council and others to adapt to and mitigate climate change will deliver positive health benefits for the Hume community.





Waste reduction and increased recycling and composting

Our message to Hume residents as per the waste hierarchy indicated below, is to aim to avoid the creation of waste in the first place to minimise the amount of waste that goes to landfill. To do this, we need to be careful about the decisions we make about the items we choose to consume.

Through the Live Green program, we can encourage a greater emphasis on rethinking our purchasing decisions, refusing items we don't need, and reusing items before we recycle them.

Aboriginal and Torres Strait Islander People's ecological practices

The Wurundjeri Woi Wurrung are the traditional custodians of the land on which Hume City is located. The *Hume Social Justice Charter 2014* recognises that self-determination is a fundamental component of social justice.

Tours of the Sunbury Rings led by Wurundjeri Woi Wurrung elders have been the most popular workshop events of the Live Green program. The Sunbury Rings Cultural Landscape is owned and controlled by the Wurundjeri Woi Wurrung. This large area of land stretches along Jackson's creek behind Salesian College.

For the Wurundjeri Woi Wurrung community the natural world is also a cultural world; therefore the Wurundjeri Woi Wurrung people have a special interest in preserving not just their cultural objects, but the natural landscapes of cultural importance. The acknowledgement of broader attributes of the landscape as cultural values that require protection (encompassing, among other things, a variety of landforms, ecological niches and habitats as well as continuing cultural practices and archaeological material) is essential to the identity and wellbeing of the Wurundjeri people.

Hume celebrates Reconciliation Week and NAIDOC week in conjunction with local Aboriginal bodies such as the Indigenous Education Centre at Kangan TAFE.



Wurudjeri Woi Wurrung Elder Uncle David Wandin teaches about the Sunbury Rings at a live green workshop in 2018.



In 2020 our Live Green workshops had a greater focus on online delivery. Here Wurundjeri Woi Wurrung Elder Uncle Bill Nicholson explores the Sunbury Rings for a live streamed event attended by 150 people.



Wiradjuri-Kamilaroi woman and Hume resident Jo Russell leads a Bush Tucker Walk and Talk at the Indigenous Education centre in Broadmeadows for NAIDOC week 2017.



Supporting children's connection to nature is an important theme in the Live Green Plan.



Connecting with nature and taking action to protect it

In our modern world people are increasingly connected to electronic devices and disconnected from nature. As the published research⁶ tells us, a connection with nature brings many health benefits. Being in nature can relieve stress, improve physical health and has been found to have positive effects on people with attention deficit disorder, asthma, and obesity.

For children, play in nature is important for developing creativity, problem-solving, and emotional and intellectual development⁷.

Through local people engaging in positive nature-based experiences, Council seeks to foster a greater appreciation of Hume City's biodiverse environments and in turn our natural areas will be even more highly valued by the community.



Food growing and sustainable food

One of the goals of Council's *Health and Wellbeing Plan 2017 – 2021* is to create a secure, healthy, and sustainable food system.

Some Hume residents experience food insecurity meaning they lack access to enough safe, nutritious food for normal growth and development and active and healthy living. Council and partners can improve food security by encouraging food growing, plant based and less processed food options, reducing social and economic inequities and working closely with food relief providers.

From a social perspective, food growing is associated with building stronger relationships and forging connections across age groups and cultures. It also contributes to personal well-being through improving access to fresh food and the mental and physical benefits associated with gardening. Local food production also decreases carbon emissions from transporting food. In recent years food growing in urban areas, including Hume City, has undergone a resurgence, with more gardening happening in schools, community spaces and private gardens. This presents an opportunity for the Live Green program to make the most of the community's interest in food growing to encourage related sustainable practices (e.g. other sustainable food options, rainwater harvesting, greywater use, water efficient gardening and composting organic wastes).

⁶ Townsend M and Weerasuriya R. (2010). *Beyond Blue to Green: The benefits of contact with nature for mental health and well-being.* Beyond Blue Limited: Melbourne, Australia

⁷ Louv R. (2010) *Last Child in the Woods – Saving our children from nature deficit disorder.* Atlantic Books London, UK.

8. Get involved and take action for the environment

Get involved with an environmental community group in Hume to learn more and to help protect our natural environment.

Contact information and groups can change and evolve over time. For up to date information about community groups in Hume with an environmental focus visit: www.hume.vic.gov.au/Residents/Waste-and-Environment/Environment/Community-Groups

Anti-Toxic Waste Alliance

Provides strong, unified, and influential community advocacy regarding regulation and operation of hazardous industries such as waste and recycling facilities.

<https://www.facebook.com/AntiToxicWasteAlliance>
antitoxicwastealliance@gmail.com

Boomerang Bags Sunbury and Craigieburn

[facebook.com/groups/384184335282991](https://www.facebook.com/groups/384184335282991)

Friends of Bulla Hill Railway

Location: Bulla
Facebook: Bulla Hill Railway Facebook page

Friends of Emu Bottom Wetlands Reserve

Location: Sunbury
Facebook: Friends of Emu Bottom Reserve
Facebook page <https://www.facebook.com/FriendsEmuBottomWetlands>

Friends of Merri Creek

Location: Numerous sites along Merri Creek
Email: friendsofmerricreek@gmail.com
<https://www.friendsofmerricreek.org.au>

Hume CAN (Climate Action Now)

Facebook: <https://www.facebook.com/HumeCAN/>
Email: humeclimate@gmail.com

Hume Community Gardens Craigieburn, Homestead Roxburgh Park, Westmeadows and Sunbury

<https://www.hume.vic.gov.au/Residents/Community-Facilities/Community-Gardens>

Hume Seed Library

<https://www.facebook.com/humeseedlibrary/>

HumeUs

<https://www.facebook.com/groups/671807649578280>

Jacksons Creek EcoNetwork

Location: Sunbury

https://www.facebook.com/JacksonsCreekEcoNetwork/?modal=admin_todo_tour

More info: <https://www.hume.vic.gov.au/Residents/Waste-and-Environment/Environment/Community-Groups>

No Toxic Soil in Sunbury

<https://www.facebook.com/notinbulla/>

Northern Recycling Group

Focused on the development and building of effective community-based recycling programs in Melbourne's Northern Suburbs.

<https://www.facebook.com/groups/431976734330052/about>
nthcommrecycle@gmail.com

Sunbury Organic Food Coop

Wholesale organic, fair trade, sustainable products including local and seasonal produce fruit and veg, household and personal care products.

<https://www.facebook.com/sunburyorganiccoop>
sunburycoopenquiries@gmail.com

Terminate Tulla Toxic Dump Action Group Inc

<https://www.facebook.com/TTTDAGinc/>



Objectives and Actions



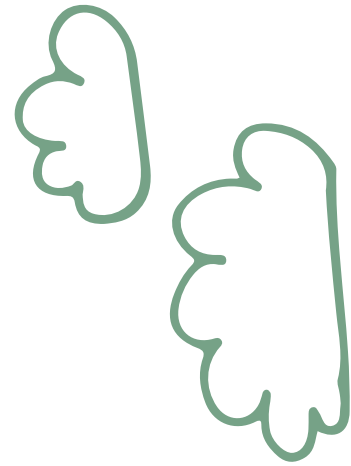
1. Objective One: Build the capacity of community leaders and community groups to effect change towards a more sustainable Hume City.

Programs	Other Strategic links	Key Performance Indicators	How success will be measured	Responsibility	Resources	Timeframe
<p>Environmental Champions</p> <p>Training in sustainability, project management and community engagement</p> <p>Ten week training in sustainability, project management and community engagement, open to Hume community members. Participants run their own sustainability projects with support from Council. See p11 for more detail</p>	<p>Council Plan - Community actively involved in civic life</p> <p>Social Justice Charter</p> <p>Multicultural Framework</p> <p>Reconciliation Action Plan</p>	<p>Minimum ten community members trained per year.</p> <p>Minimum four new community sustainability projects per year.</p> <p>Projects reach on average 100 additional community members through environmental messaging.</p>	<p>Number of people trained</p> <p>Number of new community sustainability projects per year</p> <p>Achievements and outcomes of projects</p> <p>Project reach measured through end of year evaluation interviews with participants – environmental and social outcomes</p> <p>How do community members advocate for systemic change?</p> <p>What sustainable actions do community members take?</p>	<p>Lead: Sustainable Environment</p>	<p>Within current budget</p>	<p>2021 – 2026</p> <p>Ongoing one program per year</p>
<p>Gardens for Wildlife</p> <p>Volunteer Garden Guides visit people's gardens to help create more wildlife-friendly habitats.</p>	<p>Council Plan - Community actively involved in civic life</p> <p>Land and Biodiversity Plan</p> <p>Urban Forest Principles</p>	<p>Minimum ten Garden Guides recruited and trained</p> <p>Minimum 20 garden visits conducted per year</p>	<p>Number of Garden Guides trained and actively involved</p> <p>Number of garden visits conducted</p> <p>Participant feedback survey – environmental and social outcomes</p>	<p>Lead: Sustainable Environment</p>	<p>Within current budget</p>	<p>2021-2026</p> <p>Ongoing</p>

Programs	Other Strategic links	Key Performance Indicators	How success will be measured	Responsibility	Resources	Timeframe
<p>Sustainability Taskforce</p> <p>Community environment advisory committee</p> <p>Meets 6 times per year, open to Hume community members via expression of interest process. Includes people from all walks of life, sectors, ages and cultural backgrounds.</p> <p>Council Plans, Policies and Programs with an environmental or sustainability focus are reviewed by Taskforce at the appropriate time</p>	<p>Council Plan - Community actively involved in civic life</p> <p>Social Justice Charter – right to participate in public life – advocacy in partnership with community and other stakeholders</p>	<p>14-20 community members</p> <p>6 meetings held per year</p> <p>Council Plans, Policies and Programs with an environmental or sustainability focus are reviewed by Taskforce at the appropriate time</p>	<p>Feedback and input provided by Sustainability Taskforce on Council policies and programs is passed on to responsible team, with feedback provided to Taskforce about how their input is incorporated or otherwise.</p> <p>Recommendations made by Sustainability Taskforce</p> <p>Annual evaluation survey of Taskforce members conducted</p>	<p>Lead: Sustainable Environment</p>	<p>Within current budget</p>	<p>2021 – 2026</p> <p>Ongoing six meetings per year</p>
<p>Environmental Scholarships</p> <p>Non-tertiary scholarships available for community members wishing to attend conferences or short courses on conservation land management or sustainability themes. The scholarship funds up to 80 per cent of course fees, to a maximum of \$1,500 per applicant. Total annual scholarship fund \$11,000</p>	<p>Learning Together 2030</p>	<p>Minimum three community members per year receive scholarships</p>	<p>Number of scholarship recipients</p> <p>Participant testimonials published on HCC website (or similar)</p>	<p>Lead: Sustainable Environment</p>	<p>Within current budget</p>	<p>2021 – 2026</p> <p>Ongoing, scholarships available year round or until annual budget allocation spent</p>

Programs	Other Strategic links	Key Performance Indicators	How success will be measured	Responsibility	Resources	Timeframe
<p>Nature Stewards</p> <p>Ten-week training program for Hume, Melton and Macedon councils - foster connection with nature and provide ways to take action for the environment</p>	<p>Land and Biodiversity Plan</p> <p>Rural Strategy</p>	<p>Seven community members trained per year</p> <p>Participants gain new knowledge and participate in Hume's natural environment</p>	<p>Participant feedback survey at the end of training and three months after training: did participants gain new knowledge and get active in Hume's natural environment?</p>	<p>Lead: Sustainable Environment</p>	<p>Within current budget</p>	<p>2021 - pilot with neighbouring municipalities, review with a view to implementing in 2022-2026 if successful.</p>
<p>Climate change advocacy and capacity building events</p> <p>bring together emergency services, community groups, neighbourhood houses and government agencies to discuss community resilience and strategies for responding to extreme weather events and other climate change impacts</p>	<p>Health and Wellbeing Plan</p> <p>Community Safety Plan</p> <p>Emergency Management Plan</p> <p>Greenhouse Action Plan</p> <p>Climate Change Adaptation Plan</p> <p>Land & Biodiversity Plan</p>	<p>Build community awareness about climate change</p> <p>Community members gain knowledge about effective advocacy on climate change</p> <p>Participants collaborate with others to take climate action</p> <p>Both rural and urban communities engaged</p>	<p>Participant feedback survey – did participants gain new knowledge about reducing negative impacts of climate change?</p> <p>Did participants gain new knowledge on effective climate change advocacy?</p> <p>Did participants collaborate with others to take climate action as a result of the event/s?</p>	<p>Lead: Sustainable Environment</p> <p>Support: Health and Community Wellbeing</p> <p>Community Strengthening</p>	<p>Within current budget</p>	<p>2021 – 2026 At least one event per year</p>
<p>Waste Legends</p> <p>community capacity building program about waste avoidance</p>	<p>Waste Strategy</p>	<p>Minimum 10 participants per year</p> <p>Program reaches minimum 2,000 residents with social media posts</p> <p>Participants gain new knowledge about waste avoidance and reduced waste to landfill</p>	<p>Participant feedback survey – did participants gain new knowledge about waste avoidance</p> <p>Did participants take action to improve waste avoidance practices?</p>	<p>Lead: Waste and Resource Recovery</p>	<p>Within current budget</p>	<p>Pilot: 2021, with a view to implement 2022 - 2026</p>

Programs	Other Strategic links	Key Performance Indicators	How success will be measured	Responsibility	Resources	Timeframe
<p>Municipalities in Transition - provide the opportunity for community groups with an environmental focus to share their experiences with each other and provide feedback about support required.</p>	<p>Council Plan - Community actively involved in civic life Learning Together 2030</p>	<p>Number of community groups engaged via the process. Feedback from participating community groups</p>	<p>Participation numbers Feedback surveys</p>	<p>Lead: Sustainable Environment Support: Community Strengthening Organisational Performance and Engagement</p>	<p>Within current budget</p>	<p>Pilot: 2021 with a view to ongoing support 2022 -2026</p>
<p>Work with and support community groups and community organisations on sustainability projects</p>	<p>Council Plan - Community actively involved in civic life Social Justice Charter Multicultural Framework Reconciliation Action Plan</p>	<p>Number of partnerships that align with Live Green Plan objectives KPIs developed for specific partnership programs</p>	<p>To be Determined</p>	<p>Lead: Sustainable Environment Support: Community Strengthening Family, Youth, and Children's Services</p>	<p>Within current budget</p>	<p>Ongoing 2021 - 2026</p>



2. Objective Two: Engage the Hume community to live more sustainably

Programs	Strategic links	Key Performance Indicators	How success will be measured	Responsibility	Resources	Timeframe
<p>Live Green workshops In person and online workshops on a range of sustainability topics with a particular emphasis on the themes of:</p> <ul style="list-style-type: none"> > energy and climate > waste avoidance > Aboriginal and Torres Strait Islander ecological practices > Connecting with nature and taking action to protect it > Food growing and sustainable food > New and emerging themes or priorities <p>Including workshops in collaboration with other departments and community organisations.</p>	<p>Greenhouse Action Plan 2018-2022</p> <p>Learning Together 2030</p> <p>Reconciliation Action Plan</p> <p>Integrated Water Management Plan</p> <p>Land & Biodiversity Plan</p> <p>Urban Forest Principles</p>	<p>Minimum ten workshops per year</p> <p>Minimum 1,800 people attend workshops and events</p> <p>Minimum 75% of participants gain new knowledge or skills as a result of attending</p> <p>Minimum 75% of participants take sustainable action as a result of attending</p>	<p>Number of workshops</p> <p>Number of workshop participants</p> <p>Number of people engaged at festivals</p> <p>Participant surveys on the day</p> <p>Participant surveys in the weeks following workshops</p>	<p>Lead: Sustainable Environment</p> <p>Support: Community Strengthening</p>	<p>Within current budget</p>	<p>2021 – 2026</p> <p>Ongoing</p>
<p>Live Green publications Quarterly hard copy newsletter and monthly e-News</p>	<p>Learning Together 2030</p>	<p>Continue to grow email lists by 100 or more each year</p> <p>Continue to grow hard copy mailing list by 50 or more each year</p>	<p>Number of people on mailing list</p> <p>Percentage of Live Green e-News opened and clicked</p> <p>Feedback via reader surveys</p>	<p>Lead: Sustainable Environment</p> <p>Support: Strategic Communications</p>	<p>Within current budget</p>	<p>2021 – 2026</p> <p>Ongoing</p>
<p>Community Plantings Greening Program</p>	<p>Land & Biodiversity Plan</p> <p>Urban Forest Principles</p>	<p>Minimum 5 plantings per year</p> <p>Minimum 100 participants per planting</p> <p>Minimum 500 plants planted each planting</p>	<p>Number of plantings</p> <p>Number of attendees</p> <p>Number of plants that survive for 12 months</p>	<p>Lead: Sustainable Environment</p>	<p>Within current budget</p>	<p>2021 – 2026</p> <p>Ongoing</p>

3. Objective Three: Deliver sustainability projects and events to engage Hume’s diverse community particularly multicultural communities and newly arrived residents, young people, families, people on low incomes and vulnerable to bill stress.

Programs	Strategic links	Key Performance Indicators	How success will be measured	Responsibility	Resources	Timeframe
Deliver the Hume Household Energy Program including programs to improve energy efficiency for households vulnerable to bill stress including concession card holders, families and the elderly e.g. Energy Savvy Program	Greenhouse Action Plan 2018-2022 Community Health and Wellbeing Plan	50 Hume Households have a Residential Scorecard Assessment undertaken through the Energy Savvy program. 25 Hume Households undertake energy efficiency upgrades through the Energy Savvy program. Specific KPIs to be developed for each program implemented.	Number of Hume households that participate in the Energy Savvy program through a home assessment. Number of households undertaking upgrades through the Energy Savvy program. Total value of upgrades.	Lead: Sustainable Environment Support: Health and Community Well being Community Strengthening	Within current budget	Ongoing 2021-2026
Support youth-focused climate-themed and other sustainability programs	0-24 framework	Support youth environment programs in partnership with community organisations	Number of programs supported. Number of participants. Social and environmental outcomes	Lead: Sustainable environment Support: Youth services	Within current budget	Ongoing 2021-2026
Hume Household Solar Rollout	Greenhouse Action Plan 2018-2022	100 + households take up solar Increase uptake of solar PV by Hume Households	Number of people registering for a quote and installing solar through Hume Solar Rollout Total kW of solar capacity installed Greenhouse gas emission reductions Community savings	Lead: Sustainable Environment	Within current budget	Until September 2021 with an option to extend.



Programs	Strategic links	Key Performance Indicators	How success will be measured	Responsibility	Resources	Timeframe
Energy Literacy Bring Your Bills Days (BYBD) and Victorian Energy Compare	Multicultural framework Social Justice Charter Reconciliation Action Plan	At least two BYBD events per year, minimum 75 people attend 100 residents supported per year to use Victorian Energy Compare website	Number of BYBDs Number of participants Participants survey on the day report that session helped them resolve issues with bills Number of residents supported to use Victorian Energy Compare website Total community savings from Victorian Energy Compare use	Lead: Sustainable Environment	Within current budget	Ongoing 2021-2026
Cultural Group Energy project Community development program with local community group and energy video in relevant language	Multicultural Framework	30 people receive energy literacy training in their first language 5,000+ video views	Number of participants in cultural group receiving training Number of film views	Lead: Sustainable Environment Support: Community Strengthening	Within current budget	Ongoing 2021-2026
Targeted workshops with low income, multicultural, Aboriginal and Torres Strait Islander people and community groups	Multicultural framework Social Justice Charter Reconciliation Action Plan	Minimum one Multicultural Planting Day per year Minimum one sustainability workshop, minimum 25 participants per year Minimum two events with Wurundjeri Woi Wurrung educators as part of Hume's Land and Biodiversity partnership with the Wurundjeri Woi Wurrung's Narrap land management team	Number of events Number of participants	Lead: Sustainable Environment Support: Community Strengthening	Within current budget	2021 – 2026 Ongoing

Programs	Strategic links	Key Performance Indicators	How success will be measured	Responsibility	Resources	Timeframe
Evaluate programs with gender impact lens	Gender Equality Act 2020	Review attendance and evaluation feedback and consider whether gender impact assessment is required	Program evaluation indicates aligns with Gender Equality Act 2020 Vic	Lead: Sustainable Environment	Within current budget	Ongoing 2021-2026

4. Objective Four: Support schools, early learning centres and teachers to incorporate sustainability into operations and the curriculum

Programs	Strategic links	Key Performance Indicators	How success will be measured	Responsibility	Resources	Timeframe
Pilot a New Schools Program School energy saving program Review pilot with a view to continue implementation Theme can change regularly, e.g. waste avoidance, biodiversity, conserving water	Greenhouse Action Plan Council Plan Action - Sustainably built city	Minimum three schools participate <ul style="list-style-type: none"> > audit > develop action plan to reduce environmental impacts > schools receive up to \$5,000 worth of funding to implement action plan 	Number of schools participating Actions undertaken Total reduced environmental impact, e.g. reduced greenhouse emissions	Lead: Sustainable Environment	Within current budget	Pilot 2022 Continue implementation 2023 – 2026 pending outcome of pilot review
Teachers' Environment Network (TEN) for Early Learning, Primary and Secondary teachers (partnership with Whittlesea City Council)	0-24 Framework	Four TEN Professional Development (PD) sessions per year Minimum 15-20 participants per PD Minimum 80% participating teachers report gaining new knowledge and skills to deliver in the classroom	Number of PD sessions Number of participants Participant survey – Did teachers gain new knowledge as a result of the PD? Participant survey – Did teachers implement new activities in the classroom as a result of the PD?	Lead: Sustainable Environment	Within current budget	Ongoing 2021-2026

Programs	Strategic links	Key Performance Indicators	How success will be measured	Responsibility	Resources	Timeframe
Bike Ed Teacher Training Support delivery of Bike Ed programs	Council Plan	Delivery of bicycle safety education and information programs each year	Number of people trained, number of sessions held	Lead: Community Strengthening	Within current budget	Ongoing
Waste Education incursions For students in years 3-10, education about waste avoidance and minimisation, increased recycling and composting.	0-24 Framework	Students gain new knowledge about avoiding and reducing waste to landfill Changed behaviour as a result of incursion	Number of schools participating Number of students participating Survey students following the sessions	Lead: Waste and Resource Recovery	Within current budget	Ongoing 2021-2026
Sustainability incursions for preschools on a range of themes including water, biodiversity, waste and energy	0-24 framework Waste Strategy	Minimum five incursions for Hume preschools per year, minimum 75 children	Number of incursions, Number of participants, qualitative feedback from educators via survey	Lead: Sustainable Environment Support: Family, Youth, and Children's Services	Within current budget	Pilot in 2022 and ongoing if successful
Conferences Sponsor students to attend student-led conferences, e.g. Kids Teaching Kids, Schools for Nature Summit, Australian Youth Climate Coalition	0-24 Framework	Minimum 30 students total from minimum three schools sponsored to attend conferences per year. Minimum 80% students report gaining new knowledge / skills	Number of participants Number of schools Participant surveys on the day	Lead: Sustainable Environment	Within current budget	Ongoing 2021-2026

Programs	Strategic links	Key Performance Indicators	How success will be measured	Responsibility	Resources	Timeframe
Schools for Nature Seedlings for Schools	0-24 Framework Land & Biodiversity Plan Urban Forest Principles	Seedlings provided to at least 10 schools for on-ground projects Minimum 3,000 seedlings donated to schools per year Minimum 65% survival rate for plants	Number of schools who receive seedlings Number of seedlings planted Number of plants that survive for 12 months	Lead: Sustainable Environment	Within current budget	Ongoing 2021-2026
Schools for Nature Biobuddies biodiversity incursions / excursions	0-24 Framework Land & Biodiversity Plan Urban Forest Principles Open Space Strategy	Minimum 7 biodiversity incursions / excursions delivered each year Minimum 1 excursion per year involving students planting in Hume open space	Number of biodiversity incursions / excursions. Number of students attending Number of students report they learned something new about Hume's biodiversity	Lead: Sustainable Environment	Within current budget	Ongoing 2021-2026





Hume City Council
1079 Pascoe Vale Road, Broadmeadows
PO Box 119, Dallas, Victoria 3047
Telephone 9205 2200 Facsimile 9309 0109

contactus@hume.vic.gov.au
hume.vic.gov.au

HumeLink

Hume City Council's
multilingual telephone information service.

General enquiries: Telephone 9205 2200

للمعلومات باللغة العربية	9679 9815
معلومات باللغة العربية	9679 9809
Za informacije na bosanskom	9679 9816
Za informacije na hrvatskom	9679 9817
Για πληροφορίες στα ελληνικά	9679 9818
Per avere informazioni in italiano	9679 9819
За информације на српском	9679 9820
Para información en español	9679 9821
Türkçe bilgi için	9679 9822
Muốn biết thông tin tiếng Việt	9679 9823
For other languages...	9679 9824